

YOUR 1 STOP SOLUTION FOR TESTING AND R & D NEEDS



www.aerrion.com

TOP-RATED RESEARCH & TESTING LAB

Aerrion Research Labs offers advanced scientific testing services for pharmaceuticals, cosmetics, herbal, food, and nutraceutical products across India. With expertise in analytical testing and R&D, we ensure precision, compliance, and fast reporting to help you bring safer, high-quality products to market.



- △ Quality Control Lab with Industry-Focused Testing.
- △ Food & Herbal Product Testing and Standardization.
- △ Analytical Method Development & Validation.
- △ Stability & Shelf Life Studies as per ICH & USP 233.
- △ End-to-End Formulation Support for New Products.
- △ Nationwide Sample Testing & Support.

Fully aligned with
21 CFR guidelines

Complies with
LIMS software



We are going to have

ANALYTICAL TESTING

- △ Pharmaceutical Testing
- △ Herbal Product Testing
- △ Nutraceutical Analysis
- △ Agriculture & Veterinary Testing
- △ Cosmetic Product Analysis
- △ Food Testing
- △ Stability Study
- △ Elemental & Microbiological Testing
- △ Pesticide Residue Testing



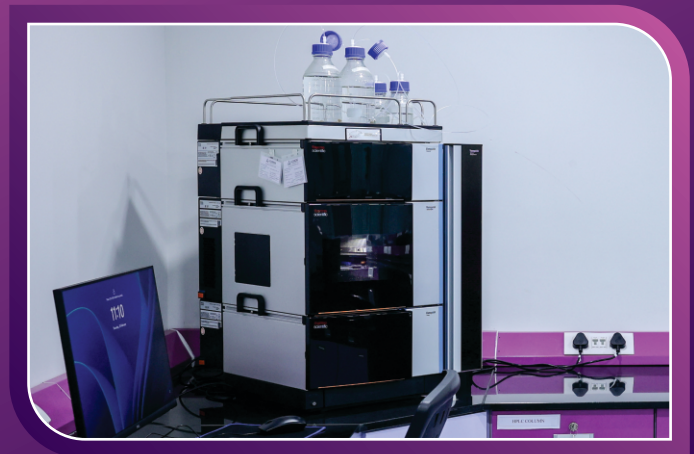
IN-HOUSE R & D SERVICES

- △ Method Development
- △ Method Validation
- △ Herbal drug standardization
- △ Shelf Life Study
- △ Bio-equivalent product development
- △ Fatty acid composition analysis
- △ Preservative Study
- △ Multi-element method development & validation (USP 233)



OTHER SERVICES

- △ Pharma Consultancy
- △ Analytical Lab Setup
- △ Instrument Training
- △ Regulatory Dossier Preparation



Aerrion Research Labs Pvt Ltd is a state-of-the-art analytical lab based in Ahmedabad, serving clients across India.

We specialize in pharmaceutical, food, cosmetic, agriculture, herbal, and nutraceutical product testing.

Our team provides expert support in analytical testing, method development, validation, and formulation research.



LAB TOUR



*Sub Plot No. 14/3, Atlas Industrial Hub,
Sarkhej-Bavla Road, Sari, Ahmedabad-382220*



+91 9898088827
+91 9898088837



info@aerrion.com
www.aerrion.com



LOCATION